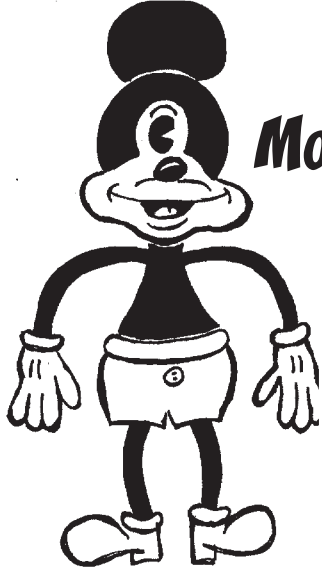


**Shufflelupagus
Jam**

1/17/2004

**Introducing the
cast...**



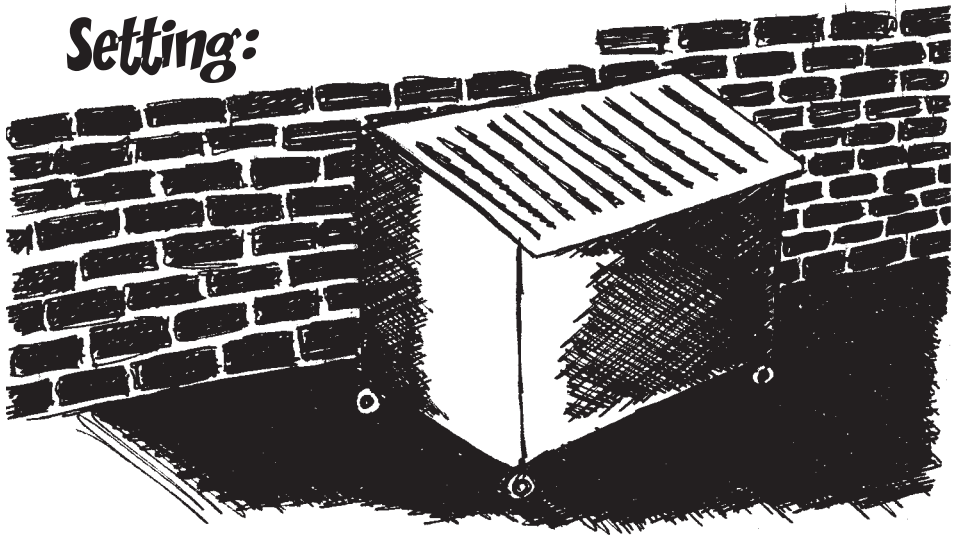
Mono Mouse!

-and-



Beer Can!

Setting:





TODAY IS A GRAND DAY FOR MONO
MOUSE. OUT ON PAROLE, HE
SEARCHES FOR A NEW HALFWAY
HOUSE TO CALL HOME...

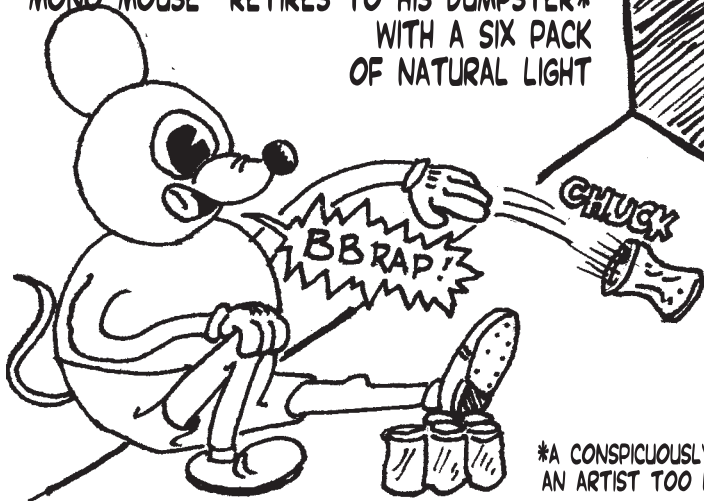


SCORE!!

YOU WON'T
BELIEVE WHAT I
JUST FOUND!



AFTER A LONG DAY AT THE SAUSAGE SHOP,
MONO MOUSE RETIRES TO HIS DUMPSTER*
WITH A SIX PACK
OF NATURAL LIGHT



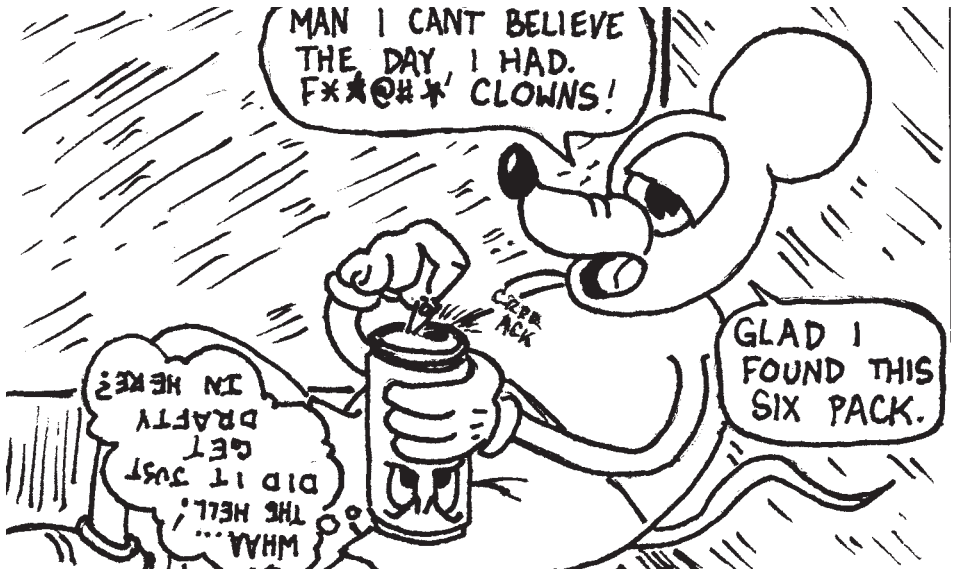
*A CONSPICUOUSLY CLEAN DUMPSTER (I.E.
AN ARTIST TOO LAZY TO DRAW TRASH)

MAN I CANT BELIEVE
THE DAY I HAD.
F*#@* CLOWNS!

GLAD I
FOUND THIS
SIX PACK.

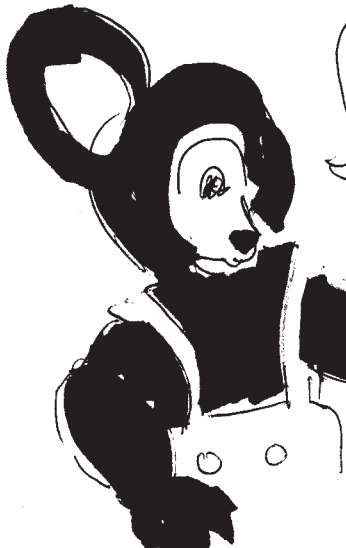
WHA...
THE HELL!
DID IT JUST
GET
DRAFTY
IN HERE?

CRACK
ACK





WHATTA YOU
DOING TO MY ASS!



HEY - I'M JUST TRYING TO
SHOT GUN A FROSTY BEER!

THANKS FOR THE RM JOB.
BUT IT'S GOING
TO COST YOU!





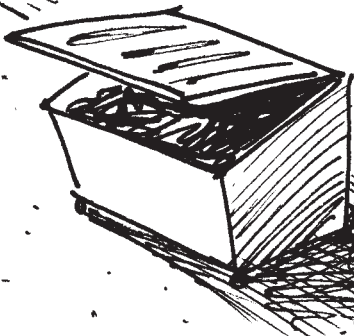
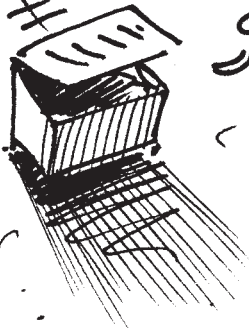
DARN...
NOT AGAIN...

HEY, STEVE!
HOW MANY YOU
GET TODAY?

TWO!

urp

SUVEE...
+ SUVEE...



Credits:

Character Designs:

Mono Mouse - Tim Winkelman

Beer Can - Galen Shoe

Setting Design:

Dumpster - Robert Elrod

Panel Credits:

1 - Trish Malone

2 - John Peters

3 - Jolyon Yates

4 - Will Barnes

5 - Will Barnes

6 - Stan Yan

7 - Ron Abeyta

8 - Michael O'Keefe

9 - John Peters